



Disclaimer

This user manual is provided as a free service by FixYourDLP.com. FixYourDLP is in no way responsible for the content of this manual, nor do we guarantee its accuracy. FixYourDLP does not make any claim of copyright and all copyrights remain the property of their respective owners.

About FixYourDLP.com

FixYourDLP.com (<http://www.fixyourdpl.com>) is the World's #1 resource for media product news, reviews, do-it-yourself guides, and manuals.

Informational Blog: <http://www.fixyourdpl.com>

Video Guides: <http://www.fixyourdpl.com/guides>

User Forums: <http://www.fixyourdpl.com/forum>

FixYourDLP's Fight Against Counterfeit Lamps:

<http://www.fixyourdpl.com/counterfeits>

Sponsors:

RecycleYourLamp.org – Free lamp recycling services for used lamps:

<http://www.recycleyourlamp.org>

Lamp Research - The trusted 3rd party lamp research company:

<http://www.lampresearch.com>

Discount-Merchant.com – The worlds largest lamp distributor:

<http://www.discount-merchant.com>



FixYourDLP.com

Sponsored by 

Network Function Edition

(PT-L785U)

This projector has networking functions which allow it to be controlled through a web browser on a PC.

The controlled items are:

- Projector's settings and adjustment
- Projector's status display
- Transmission of a E-mail message when the projector has a problem



Discount-Merchant.com (800) 281-8860
THE TRUSTED SOURCE FOR PROJECTOR LAMPS AND ACCESSORIES

Contents

Connecting a PC	3
System requirements	3
Connection example	3

Projector Settings	4
Network settings screen	4
Network status screen	5

Using Web Browser Control	6
Access procedure	6
Basic control page	7
Detail control page	8
Status information page	9
Error information page.....	10
E-mail setup page	12
DNS server setup page	14
POP server setup page	15
Adjust clock page	16
Network status page	17
Password change page.....	18



Trademarks:

- Windows is a trademark or registered trademark of U.S. Microsoft Corporation in the U.S. and other countries.
- Other company names, product names or other names noted in this manual are trademarks or registered trademarks of the respective companies. Note that ® and TM marks are not indicated in the text of this manual.

Connecting a PC

■ System requirements

The following system specifications are required in order to use the networking functions.

Hardware requirements

OS: Windows XP/2000/Me (Millennium Edition)/98SE (Second Edition)

CPU: Pentium III or faster or compatible processor
(Celeron 633 MHz or faster is recommended)

RAM: 64 MB or more (128 MB or more for Windows XP/2000)

Hardware conditions: If you want to use the e-mail function, make sure the system can handle e-mail.

Web browser: Internet Explorer 6.0 or newer, Netscape Communicator 7.0 or newer

LAN cable

Type: Category 5 compatible straight cable

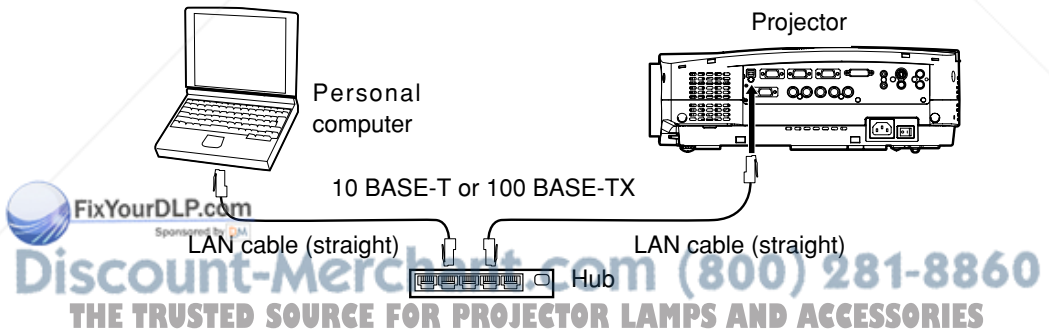
Length: 100 meters or less

Note:

Note that operation is not guaranteed when used with system environments other than the above or on homemade computers.

Operation is not guaranteed for all computers that meet the above conditions.

■ Connection example



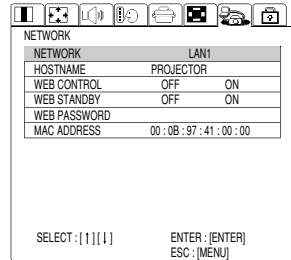
Note:

Touching the LAN port with your hand (or body) when you are carrying a static charge may damage the equipment due to a discharge of static electricity. Therefore, be careful not to touch the LAN port or metal parts of the LAN cable.

Projector Settings

■ Network settings screen

- 1 Press the [MENU] button.
The menu screen appears.
- 2 Use the [◀▶] buttons to display the Network Settings screen, then press the [ENTER] button.
- 3 Use the [▲▼] buttons to select a parameter, then change its setting.



Parameter	Description
NETWORK	Select this parameter and press the [ENTER] button in order to set DHCP, IP address, subnet mask, and gateway settings. (See the next page for detailed information.)
HOSTNAME	<ol style="list-style-type: none"> 1. Select this parameter and press the [ENTER] button in order to set the name of the projector in the network. 2. Use the [▲▼◀▶] buttons to select alphanumeric characters (up to 16 characters), then press the [ENTER] button. 3. Select [OK], then press the [ENTER] button.
WEB CONTROL	Use the [◀▶] buttons to toggle web control ON/OFF. ON: Enables control through a web browser. OFF: Disables control through a web browser.
WEB STANDBY	Use the [◀▶] buttons to toggle web standby ON/OFF. ON: During standby, the lamp in the projector can be turned on through web browser controls. OFF: During standby, the lamp in the projector cannot be turned on through web browser controls.
WEB PASSWORD	<p>The default setting is “panasonic” (all lower case). Use the following procedure to change the password. This procedure sets the password which is entered on page 6.</p> <ol style="list-style-type: none"> 1. Select this parameter to set the password to be entered when the projector is accessed through a web browser, then press the [ENTER] button. 2. Use the [▲▼◀▶] buttons to select alphanumeric characters (up to 16 characters), then press the [ENTER] button. 3. Select [OK], then press the [ENTER] button.
MAC ADDRESS	A MAC address (Media Access Control Address) which is unique to the network equipment is displayed here. The MAC address may be needed when, for example, a DHCP server is used.



FixYourDLP.com

powered by DM

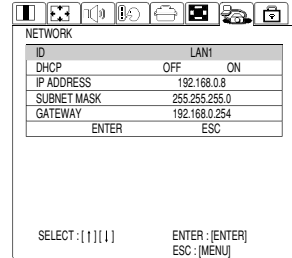
WEB PASSWORD

Discount-Media.com (800) 281-8860

THE TRUSTED SOURCE FOR PROJECTOR LAMP AND ACCESSORIES

■ Network status screen

- 1 Select [NETWORK] on the screen discussed on the preceding page, then press the [ENTER] button.
- 2 Use the [▲▼] buttons to select a parameter, then change its setting.



Parameter	Description
ID	IDs are identification numbers under which settings are stored. Three different IDs can be stored (LAN1 through LAN3).
DHCP	Use the [◀▶] buttons to toggle this setting ON/OFF. ON: Select this setting to automatically acquire an IP address using a DHCP server. OFF: Select this setting if you are not using a DHCP server.
IP ADDRESS	Enter settings in these parameters if you are not using a DHCP server.
SUBNET MASK	1. Select a parameter, then press the [ENTER] button.
GATEWAY	2. Use the [▲▼◀▶] buttons to select numbers and periods, then press the [ENTER] button.
	3. Select [OK], then press the [ENTER] button.

Notes:

- If you are using a DHCP server, make sure it is on and ready.
- IP address, subnet mask, and gateway settings should be obtained from your network administrator.

Using Web Browser Control

■ Access procedure

- 1 Start the web browser on your PC, then enter the IP address which was set in the projector.



- 2 Enter “user1” in the user name field, then enter the password in the password field.

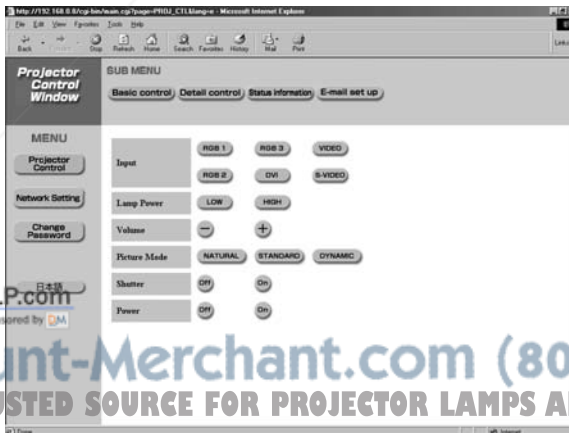
The default setting is “panasonic” (all lower case). If you have changed the password, enter the new password here. If you forget your password, set a new password using the procedure described on page 4.

The host name set in the projector is displayed in the “Realm” field.



- 3 Click [OK].

The Basic Control page is displayed.



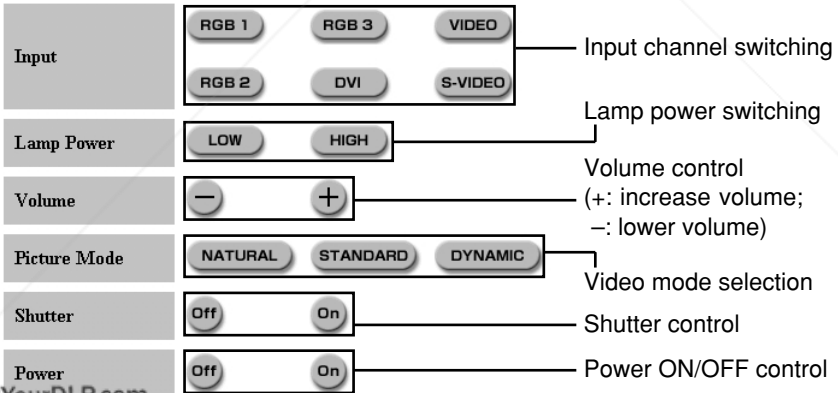
Note:

Do not enter settings or perform controls with multiple web browser windows open at the same time.

Basic control page

This page is the first page displayed when the projector is accessed through a web browser.

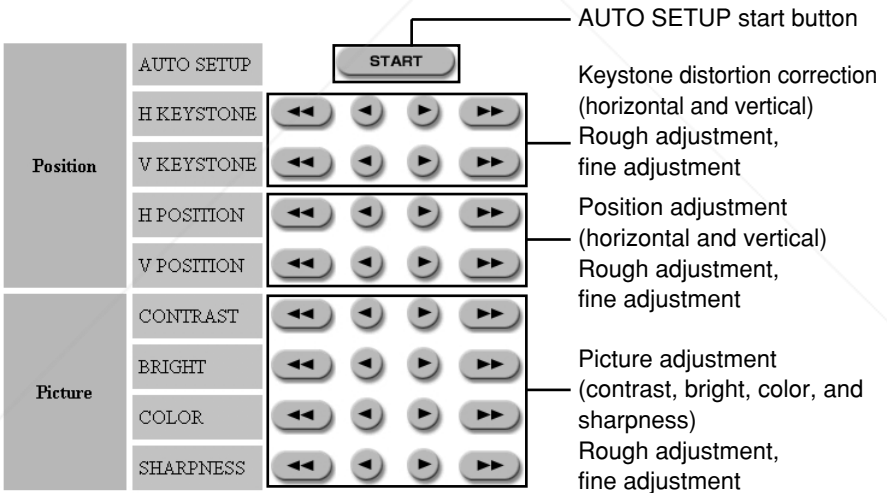
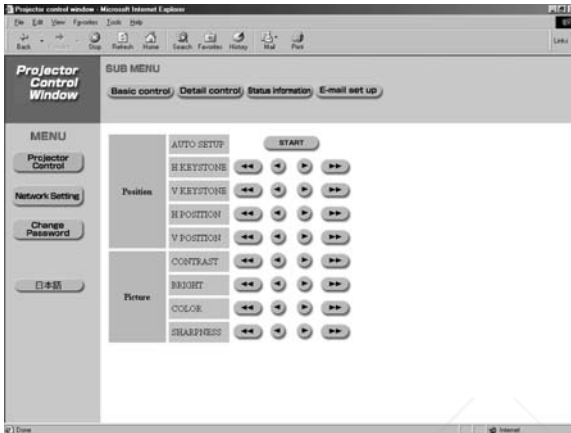
To move from another page, click [Projector Control], then [Basic control].



Using Web Browser Control (continued)

■ Detail control page

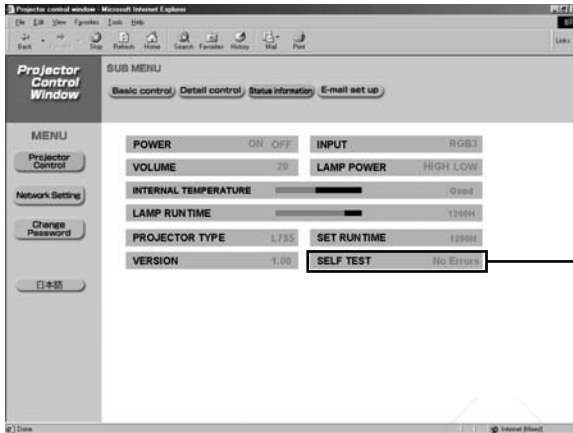
Click [Projector Control], then [Detail control] to display the Detail control page.



Discount-Merchant.com (800) 281-8860
THE TRUSTED SOURCE FOR PROJECTOR LAMPS AND ACCESSORIES

■ Status information page

Click [Projector Control], then [Status information] to display the Status information page.



When Error Click Here is displayed, refer to the next page.

POWER	ON OFF	INPUT	RGB3
VOLUME	20	LAMP POWER	HIGH LOW
INTERNAL TEMPERATURE			Good
LAMP RUNTIME			1200H
PROJECTOR TYPE	L785	SET RUNTIME	1200H
VERSION	1.00	SELF TEST	No Errors

POWER: ON and OFF

VOLUME: 0 to 20

INTERNAL TEMPERATURE:
Good, Warning and Caution

LAMP RUNTIME: 0 to 1500 hours

PROJECTOR TYPE: L785

VERSION: Projector firmware
version display

INPUT: RGB1, RGB2, RGB3, DVI,
VIDEO and S-VIDEO

LAMP POWER: HIGH and LOW

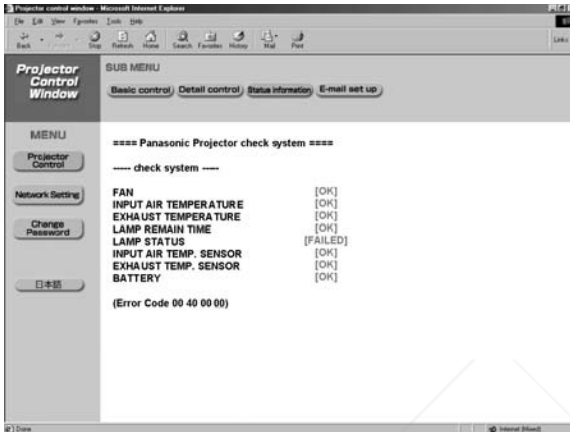
SET RUNTIME: 0 to 2000 hours

SELF TEST: No Errors and Error

Using Web Browser Control (continued)

■ Error information page

When **Error** [Click Here](#) is displayed on the status information screen, click it to display the error details.



FAN
INPUT AIR TEMPERATURE
EXHAUST TEMPERATURE
LAMP REMAIN TIME
LAMP STATUS
INPUT AIR TEMP. SENSOR
EXHAUST TEMP. SENSOR
BATTERY

Items checked for errors

[OK]
[OK]
[OK]
[OK]
[FAILED]
[OK]
[OK]
[OK]

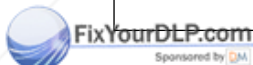
[OK]: Normal
[FAILED]: Error

Note:

In the case of some errors, the standby status is established in order to protect the projector. "WEB STANDBY" must be set to [ON] to display the error information page. (See page 4.)

When [FAILED] has appeared for an item:

Item	Description
FAN	Trouble has occurred in the fan or its drive circuit. The network functions are disabled when the standby status has been established by this error.
INPUT AIR TEMPERATURE	The input air temperature is too high. It may be that the projector is being used where the ambient temperature is high such as near a heating appliance.
EXHAUST TEMPERATURE	The air exhaust temperature is too high. The air outlet or exhaust holes may be blocked.
LAMP REMAIN TIME	The lamp runtime has exceeded the prescribed cumulative time, and it is now time to replace the lamp.
LAMP STATUS	Trouble has occurred in the lamp or its drive circuit.
INPUT AIR TEMP. SENSOR	Trouble has occurred in the sensor used to detect the input air temperature.
EXHAUST TEMP. SENSOR	Trouble has occurred in the sensor used to detect the exhaust temperature.
BATTERY	The backup battery has been run out.

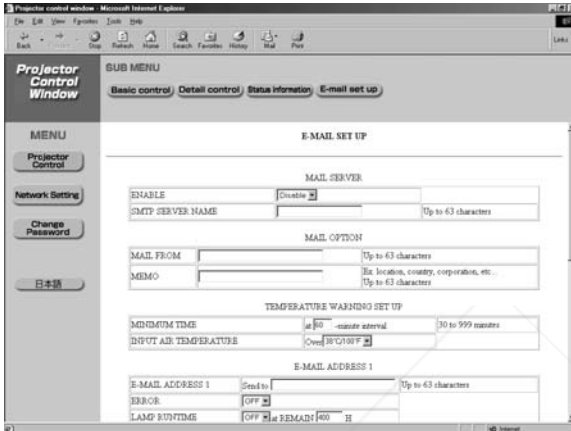


Discount-Merchant.com (800) 281-8860
If requesting service, ask your nearest Authorised Service Center.
THE TRUSTED SOURCE FOR PROJECTOR LAMPS AND ACCESSORIES

Using Web Browser Control (continued)

E-mail setup page

With this projector, if a problem occurs or if the lamp usage time reaches a set value, an e-mail message can be sent to one or more preset e-mail addresses (maximum two addresses). Click [Projector Control], then [E-mail set up] to display the E-mail setup page.



E-mail Enable/Disable toggling SMTP server field

MAIL SERVER	
ENABLE	Disable
SMTP SERVER NAME	Up to 63 characters

Sender field

(alphanumeric characters)

MAIL OPTION

MAIL FROM	Up to 63 characters
MEMO	Ex. location, country, corporation, etc... Up to 63 characters

Memo field

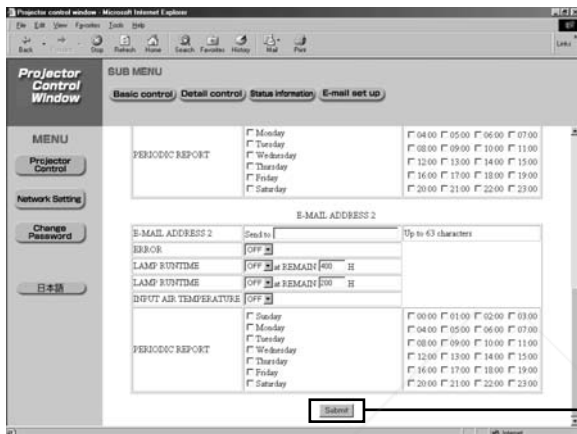
(alphanumeric characters)

TEMPERATURE WARNING SET UP

MINIMUM TIME	at 60 -minute interval	30 to 999 minutes
INPUT AIR TEMPERATURE	Over 38°C/100°F	

Minimum sending interval field (applies only to temperature warnings)

Set temperature selection (38 °C/100 °F, 40 °C/104 °F, 42 °C/108 °F and 44 °C/111 °F)



Button to update settings

ON/OFF toggling for permission to send e-mail when error occurs

Destination e-mail address field

E-MAIL ADDRESS 2	Send to	<input type="text"/>	Up to 63 characters
ERROR	<input type="checkbox"/>		
LAMP RUNTIME	<input type="checkbox"/>	at REMAIN <input type="text" value="400"/> H	
LAMP RUNTIME	<input type="checkbox"/>	at REMAIN <input type="text" value="200"/> H	
INPUT AIR TEMPERATURE	<input type="checkbox"/>		
PERIODIC REPORT	<input type="checkbox"/> Sunday <input type="checkbox"/> Monday <input type="checkbox"/> Tuesday <input type="checkbox"/> Wednesday <input type="checkbox"/> Thursday <input type="checkbox"/> Friday <input type="checkbox"/> Saturday	<input type="checkbox"/> 00:00 <input type="checkbox"/> 01:00 <input type="checkbox"/> 02:00 <input type="checkbox"/> 03:00 <input type="checkbox"/> 04:00 <input type="checkbox"/> 05:00 <input type="checkbox"/> 06:00 <input type="checkbox"/> 07:00 <input type="checkbox"/> 08:00 <input type="checkbox"/> 09:00 <input type="checkbox"/> 10:00 <input type="checkbox"/> 11:00 <input type="checkbox"/> 12:00 <input type="checkbox"/> 13:00 <input type="checkbox"/> 14:00 <input type="checkbox"/> 15:00 <input type="checkbox"/> 16:00 <input type="checkbox"/> 17:00 <input type="checkbox"/> 18:00 <input type="checkbox"/> 19:00 <input type="checkbox"/> 20:00 <input type="checkbox"/> 21:00 <input type="checkbox"/> 22:00 <input type="checkbox"/> 23:00	

Change lamp usage time set value

ON/OFF toggling for permission to send e-mail based on lamp usage time

ON/OFF toggling for permission to send e-mail based on air intake sensor temperature

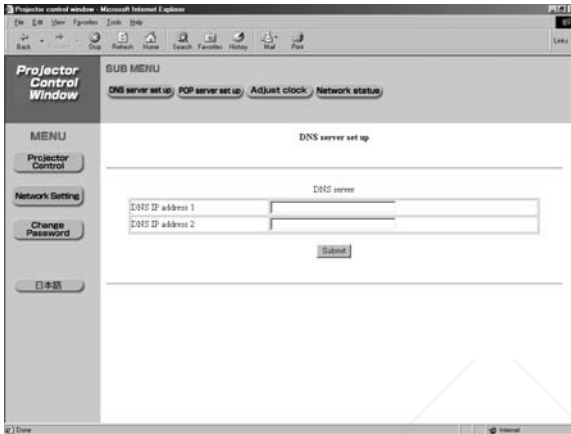
Periodic warning interval setting (e-mail is sent on the checked days of the week/times)

※ The settings for e-mail address 1 are the same.

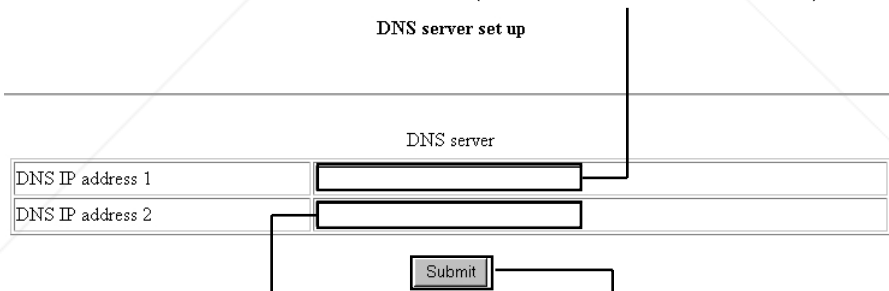
Using Web Browser Control (continued)

■ DNS server setup page

Click [Network Setting], then [DNS Server set up] to display the DNS Server Setup page.



Primary DNS server address
Available input characters:
Numbers (0 - 9), period (.)
(ex. ***.***.***.***)



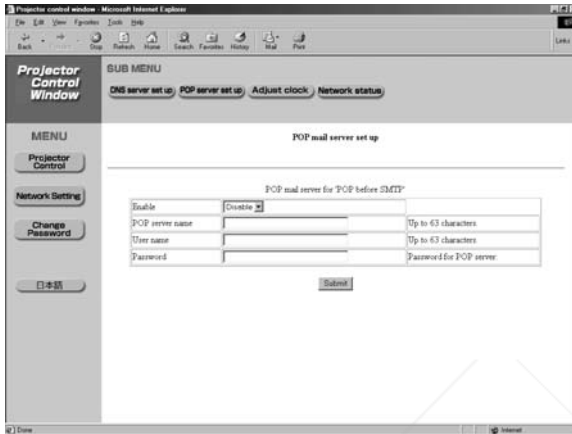
Secondary DNS server address

Button to update settings

Available input characters:
Numbers (0 - 9), period (.)
(ex. ***.***.***.***)

POP server setup page

Click [Network Setting], then [POP server set up] to display the POP Server Setup page.



toggling between
Enabling/Disabling
POP before SMTP

POP server name field
Available input characters:
Alphanumeric characters (A-Z, a-z, 0-9),
hyphen (-), period (.)

POP mail server for 'POP' before SMTP'	
Enable	<input type="button" value="Disable"/>
POP server name	<input type="text"/> Up to 63 characters.
User name	<input type="text"/> Up to 63 characters.
Password	<input type="text"/> Password for POP server.

POP server user
name field

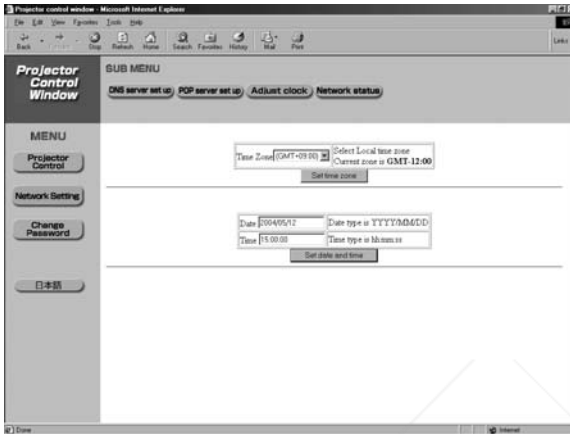
POP server
password field

Button to update settings

Using Web Browser Control (continued)

■ Adjust clock page

Click [Network Setting], then [Adjust clock] to display the Adjust clock page.



Time zone selection

Button to update time zone setting

Time Zone: (GMT+09:00) Select Local time zone
Current zone is GMT-12:00
Set time zone

Date: 2004/05/12 Date type is YYYY/MM/DD
Time: 15:00:00 Time type is hh:mm:ss
Set date and time

New date field

New time field

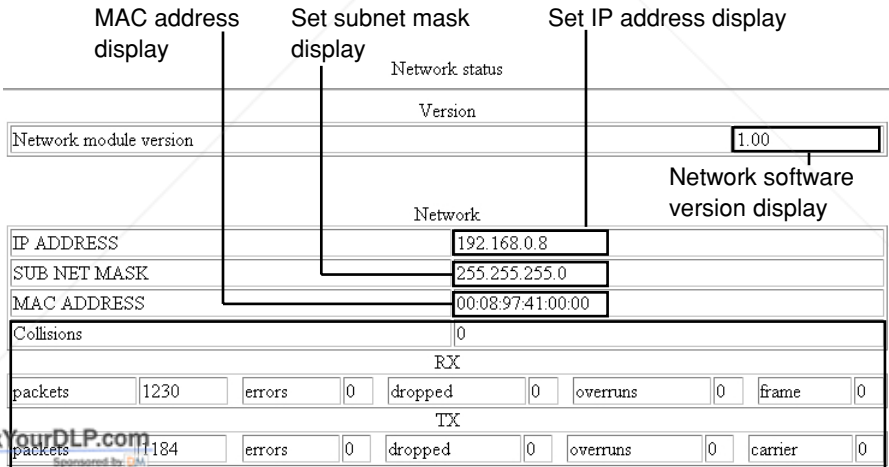
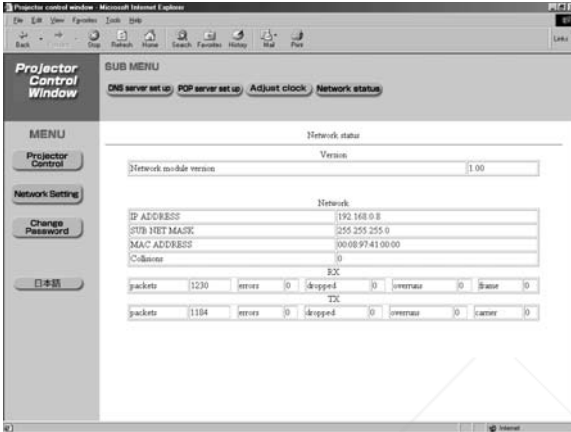
Button to update time and date settings

Note:

If the time becomes incorrect immediately after setting the correct time, then the battery needs to be changed. Contact the dealer where you bought the projector to have the battery changed.

■ Network status page

Click [Network Setting], then [Network status] to display the Network status page.



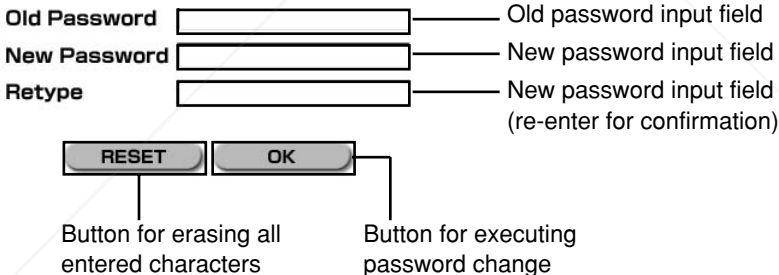
Network status display

Using Web Browser Control (continued)

■ Password change page

This page can be used to change the password entered on page 6. The password can be changed even through the PC. See page 4 for information on changing the password through the projector.

Click [Change Password].



Discount-Merchant.com (800) 281-8860
THE TRUSTED SOURCE FOR PROJECTOR LAMPS AND ACCESSORIES



Discount-Merchant.com (800) 281-8860
THE TRUSTED SOURCE FOR PROJECTOR LAMPS AND ACCESSORIES

Panasonic[®]

Professional/Industrial Video

Panasonic Broadcast & Television Systems Company

Division of Matsushita Electric Corporation of America

One Panasonic Way 4E-7 Secaucus, NJ 07094 (201) 392-4443
3330 Cahuenga Blvd West Los Angeles, CA 90068 (323) 436-3500

Technical Support:

(800) 524-1448

(800) 526-6610

FAX: (201) 392-6514

E-Mail: pbtssupport@panasonic.com

© 2004 Matsushita Electric Industrial Co., Ltd. All Rights Reserved.

Printed in Japan

M0604-0



Disclaimer

This user manual is provided as a free service by FixYourDLP.com. FixYourDLP is in no way responsible for the content of this manual, nor do we guarantee its accuracy. FixYourDLP does not make any claim of copyright and all copyrights remain the property of their respective owners.

About FixYourDLP.com

FixYourDLP.com (<http://www.fixyourdlp.com>) is the World's #1 resource for media product news, reviews, do-it-yourself guides, and manuals.

Informational Blog: <http://www.fixyourdlp.com>

Video Guides: <http://www.fixyourdlp.com/guides>

User Forums: <http://www.fixyourdlp.com/forum>

FixYourDLP's Fight Against Counterfeit Lamps:

<http://www.fixyourdlp.com/counterfeits>

Sponsors:

RecycleYourLamp.org – Free lamp recycling services for used lamps:

<http://www.recycleyourlamp.org>

Lamp Research - The trusted 3rd party lamp research company:

<http://www.lampresearch.com>

Discount-Merchant.com – The worlds largest lamp distributor:

<http://www.discount-merchant.com>



FixYourDLP.com

Sponsored by 